

## Technical News Bulletin – TNB243

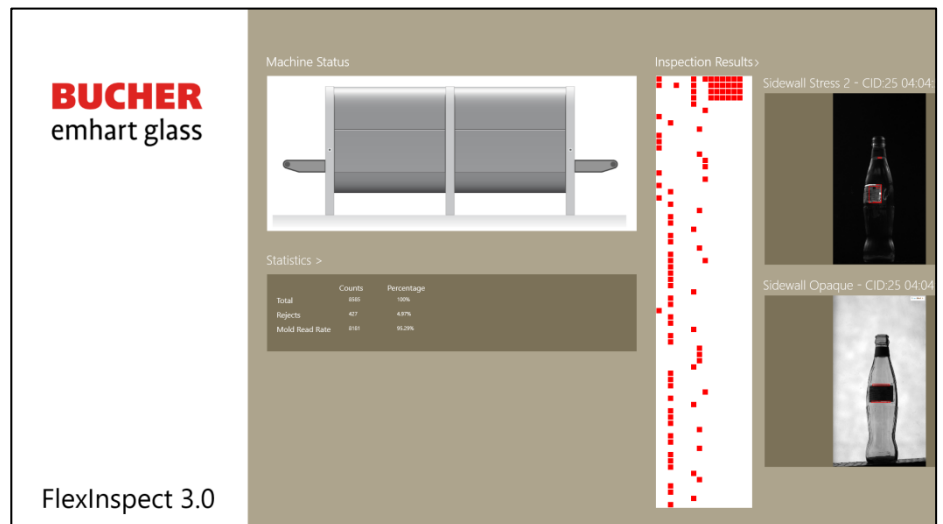
Elmira, NY, February 2016

### FleXinspect – Powered by SCOUT™ technology

#### Bucher Emhart Glass (BEG) introduces the next evolution in advanced inspection technologies

It's called SCOUT, a technology advancement that improves and simplifies glass container inspection and is available now on all FleXinspect BC, B, and C machines.

When BEG introduced the FleXinspect machine platform, FleXinspect was promoted as being configurable, reliable and flexible to the ever changing needs of the glass industry; a machine platform created and designed to evolve as technology moves ahead. SCOUT is the next evolution for FleXinspect.



#### What is SCOUT technology?

SCOUT is software.

SCOUT is hardware.

SCOUT is communication.

SCOUT is information.

SCOUT is the system architecture that the FleXinspect products will use to harness the power of new and evolving technologies.

#### All FleXinspect B, FleXinspect C & FleXinspect BC machines shipping today are fully equipped with SCOUT technology

For machine operators, the obvious difference with today's machines is the totally new and easier to use human machine interface (HMI). Following gesture-based user concepts from smart phones and tablets, BEG has created a unique operating experience for the users. The new navigational methods for machine operation and setup are focused on automation, "ease of use" and simplification without sacrificing accuracy or reliability.



## **SCOUT technology provides many features and benefits**

The newly released inspection software removes much of the complexity associated with glass container inspection. Gone are the days when the inspection software simply looks for defects of a certain size and color. With the new SCOUT technology software, everything is based on defect classifications, automatic learned variations and predefined defect limits. The results are accurate, fast job setups that have the ability to reliably discriminate between different types of flaws found in glass containers. The new HMI and built-in automation significantly reduces job change time and fine tuning.

## **What machines can use this new technology?**

All Flexinspect B, C and BC machines in operation can be updated to run the SCOUT technology. The SCOUT integration for the Flexinspect T and Flexinspect M machines are in the development stage and will be released later this year. This integration will also include SCOUT technology upgrades for installed machines in the field. In addition, BEG will soon release information on upgrading older product families to operate on the SCOUT technology platform.

For more information about the latest SCOUT technology, please contact your local Bucher Emhart Glass sales account manager, or request more information at <http://www.emhartglass.com/contact>.